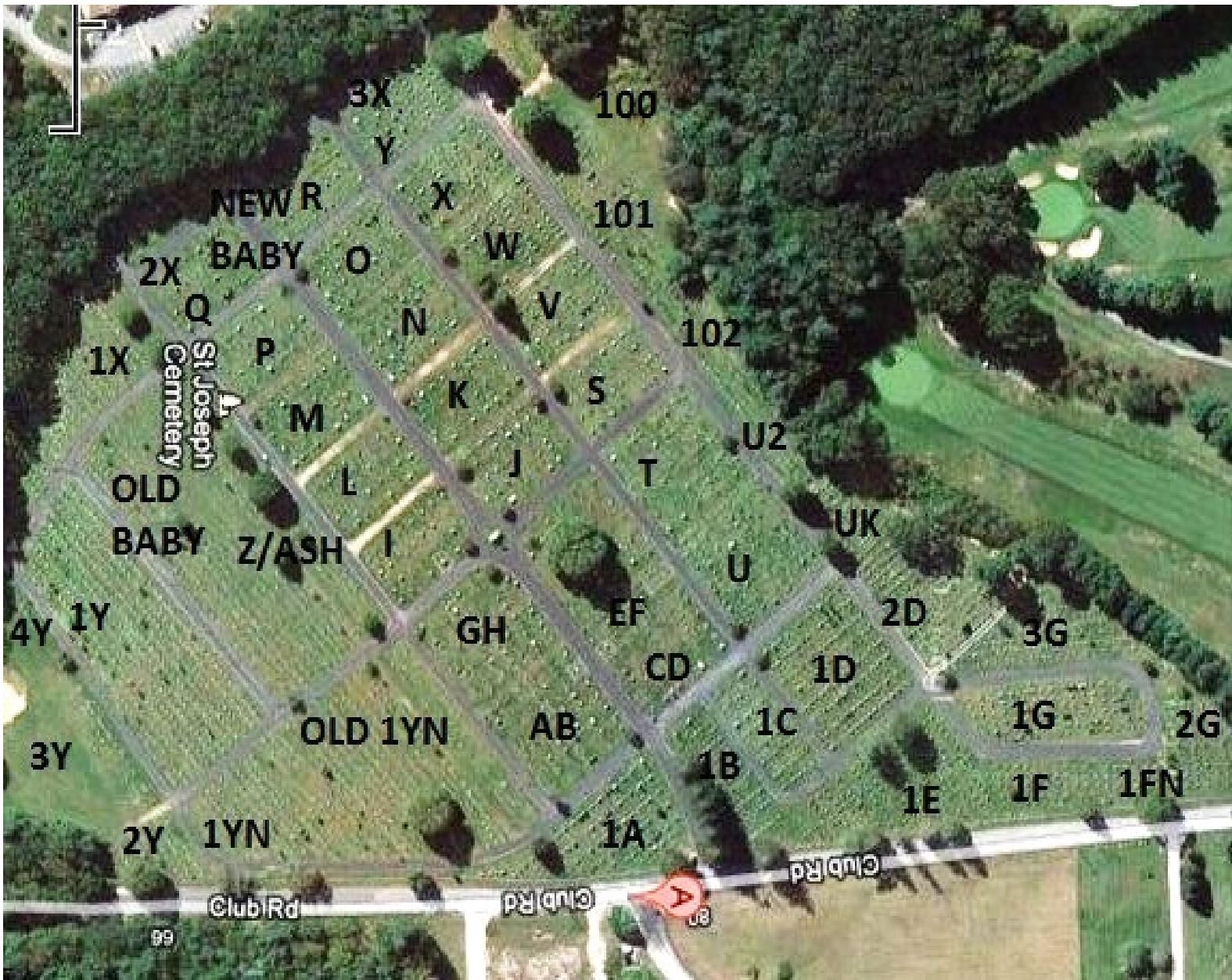


Saint Joseph Cemetery

Club Road, Windham, Connecticut



One Monument Per Plot

Cremation Plot: Flat Markers Only 24" Base, 2'10" Total Height/ 36" base in Section 100

Single Plot: 24" Base, 2'10" Total Height

2 Grave Plot: 3'6" Base, 3' Total Height

3 Grave Plot: 4'6" Base, 3'2" Total Height

4 Grave Plot: 5'6" Base, 3'4" Total Height

REVISED MONUMENT AND DECORATION RULES

St. Joseph Cemetery Office

99 Jackson St.

Willimantic, CT 06226

860-423-8439

ST. JOSEPH CEMETERY IS THE RESTING PLACE OF OUR BELOVED DEAD. PLEASE FEEL WELCOME TO VISIT AND PRAY. THIS IS SACRED GROUND. PLEASE RESPECT IT AND THE FEELINGS OF THOSE WHO MOURN. DISRESPECT OF ANY KIND WILL NOT BE TOLERATED.

FOR THE SAFETY OF OUR CEMETERY STAFF:

- NO DECORATIVE ROCKS OR STONES ARE ALLOWED ON OR AROUND A PLOT.
- THE ONLY DECORATIONS PERMITTED ARE FLORAL DECORATIONS (LIVE OR ARTIFICIAL) AND SMALL FLAGS (ONE PER MONUMENT). FLAGS ARE TO BE IN A GOVERNMENT HOLDER AT THE BASE OF THE MONUMENT STONE.
- THE LANDSCAPING OF SAINT JOSEPH CEMETERY IS THE RESPONSIBILITY OF THE CEMETERY ALONE. PLANTING OF TREES OR ANYTHING ELSE IS NOT ALLOWED.
- FROM APRIL TO OCTOBER FLORAL DECORATIONS MAY BE PLACED AT THE SIDES AND ON TOP OF UPRIGHT MONUMENTS ONLY. NO FLOWERS OR DECORATIONS ARE TO BE PLACED ON FLAT MARKERS OR IN BETWEEN THE ROWS. THIS FACILITATES THE MOWING AND TRIMMING OF GRASS.
- FROM NOVEMBER TO MARCH WREATHS OR OTHER SEASONAL GREENERY MAY BE PLACED ON THE SIDES, IN FRONT OR ON TOP OF MONUMENTS.
- NO GLASS VASES OR BOTTLES.
- NO BALLOONS WITH STRING ARE ALLOWED IN THE CEMETERY AND WILL BE REMOVED.
- NO DOGS OR PETS ALLOWED.
 - ALL OTHER DECORATIONS WILL BE REMOVED FOR THE SAFETY OF OUR WORKERS AND AT THE DISCRETION OF THE CEMETERY.